

VersiColor Wander™ RGB

Part #: HMTL1215-LLLWL-10-XX

Horizontal Bend Diffused Flexible LED Light

Features

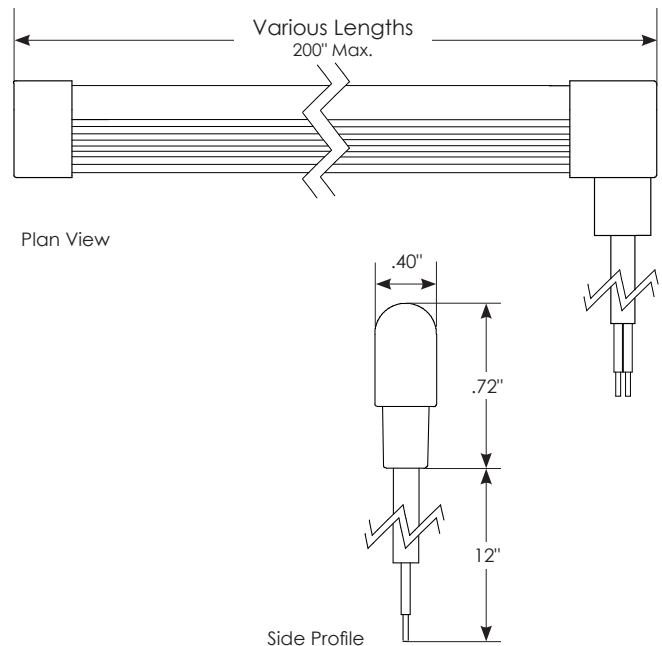
- Bottom wire exit provides a clean, seamless installation with no visible wires.
- RGB chips provide an endless amount of color combinations.
- Electronics design ensures even light output from beginning of the strip to the end of the strip with minimal drop in output.
- The horizontal bend radius allows for installation around curved ceilings and signage.
- IP66 rating allows for installation in exterior or wet locations



Product Details

Dimensions	0.40" W x 0.72" H x Various L
Housing	Silicone
Wattage	2.9 W/Ft
Voltage	12V DC
Current	0.21 Amp/Ft
Lumens [Averaged over 30 ft]	35 Lumens/Ft
Color Temperature	RGB
CRI	80+
Efficacy	12.22 Lm/W
Cut Increment [cannot be cut in field]	~1"
LED Count	36 per foot
IP Rating	IP66
Operating Temp.	-4°F to +140°F (-20°C to +60°C)

Product Dimensions



Specification Guide:

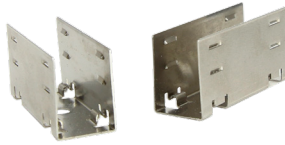
Sample Part #: HMTL1215-20012-10-BW

Base Part #.....
 Voltage.....
 Color Temp.....
 Light Length (LLL).....
 Wire Length (WL).....
 Light Width.....
 Wire Exit (XX).....

Base Part #	Voltage	Color Temp.	Light Length (LLL)	Wire Length (WL)	Light Width	Wire Exit (XX)
HMTL	12 - 12V	15 - RGB LEDs	200 - 200 in. Max Length cuts every ≈1"	12 - 12 in.	10 - 10mm (0.40 in.)	BW - Bottom Wire Exit
Note: Contact sales for info on available color temperatures and cut lengths. Cannot be field cut.						

Accessory Specification

Description	Part #
Mounting Clip - Qty 1 (recommend one clip every 12")	150-00251
Mounting Clip Kit - Qty 12	800-00218



Description	Part #
Plastic Extruded Channel with Tape	HMTL10-LL-XX-T
Plastic Extruded Channel without Tape	HMTL10-LL-XX
LL = Length contact sales for available length XX = Channel Color WH - White or BK - Black	

